



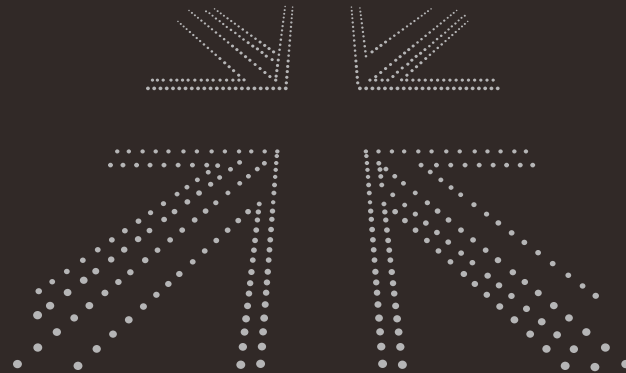
曼涂英国总部官网



曼涂中国官网



曼涂微信公众号



**Manntree® 曼涂**  
— Paint My Love —

**Manntree Paint Co., Ltd.**  
Tel: +44-20-32390208  
Web: [www.manntree.co.uk](http://www.manntree.co.uk)

**Headquarters :**  
3rd Floor, No.207 Regent  
street, London, United Kingdom

**曼涂中国营销中心:**  
地址: 广东省佛山市南海万石工业区  
电话: 0757-85219901  
网址: [www.manntree.com.cn](http://www.manntree.com.cn)

Design by manntree in United Kindom



曼岛石灰基使用指南

# LIME BASED FINISHES

decorative finishes based on seasoned slaked lime



## LIME BASED FINISHES

石灰基的完成

### The concept

概念

A natural approach to wall decoration, a research of simplicity and style. A finishing coat with a timeless classical spirit which interprets the desire of naturalness, concreteness and character.

一种自然的墙面装饰方法，简约与风格的研究。带有永恒古典精神的涂装，诠释了自然、具体和个性的渴望。

**Manntree®** 曼涂  
— Paint My Love —



# THE NATURE OF THE PRODUCT

天然的产品

**ManX** originally designed for the restoration of renaissance **ManX** isle old architectures. It follows the traditional application technique used throughout the years.

It enables surfaces to breath while maintaining a strong resistance to nature's wear and tear Thanks to its natural components. **ManX** is both an environmentally friendly product and a strong defence against abrasion and acid rain.

曼岛石灰基 (ManX) 为了修复各种曼恩岛上的古老建筑而设计的, 它沿用了英国许久以来使用的传统应用技术。

它使表面能够呼吸, 同时由于其天然成分对自然的磨损和撕裂具有很强的抵抗力。曼岛石灰基是一种环保产品, 同时也可以对磨损和酸雨的具有防御能力。

The peculiarity of this metamorphic rock is to reflect light in a characteristic way emphasizing color tones, lights and shades.

Magnesiatic seasoned slaked lime, fine marble grains of authentic white Carrara marble, colored earths and inorganic oxides, are the main ingredients of this natural marmoreal plaster.

这种变质岩的特点是反射光。它的特点是非常强调颜色色调, 灯光和阴影。

氧化镁熟化石灰, 精细的大理石颗粒。白色的Carrara大理石, 彩色的地球和无机氧化物, 是构成这种天然大理石的主要成分。





# THE GREEN SPIRIT

石灰基的环保理念

Today this lime is obtained in a furnace following traditional procedures. Once the product is applied, due the chemical composition of this air-hardening lime, it begins to reabsorb a good portion of the CO2 emitted during the production process, this is the so called carbonatation phase.

It seems that the traditional seasoned slaked lime holds a special record: 60-62% of the CO2 total emission is re-absorbed drastically reducing the permanent CO2 footprint. Carbon dioxide emissions from lime-air hardened lime save 53-56% over hydration lime, while hydraulic lime performs at 26% and the other types of cement do not exceed 1%. Choosing a seasoned slaked lime based finish for your project is an excellent sustainable and ecological choice.

今天, 这种石灰是在传统工艺的熔炉中获得的。一旦产品被应用, 由于这种空气硬化石灰的化学成分, 它开始重新吸收在生产过程中排放的大部分二氧化碳, 这就是所谓的碳酸化阶段。

这可以说传统的熟石灰有一个特别的现象: 二氧化碳排放总量的60-62%被重新吸收, 大大减少了二氧化碳排放量。石灰性空气硬化石灰的二氧化碳排放量比水化石灰节约了53-56%, 而水化石灰则为26%, 而其他类型的则不超过1%。  
为你的项目选择一种非常考究的熟石灰, 这是一个很好的可持续和生态的选择。

## Water vapor permeability

Unlike acrylic based coatings, lime based coatings, because of their nature, do not film creating a physical barrier to water vapor transmission. On the contrary, lime based coatings promote air and water vapor exchange throughout the walls. Dry walls contribute to a healthy and comfortable domestic environment.

## Biocides?

**Manntree ManX** doesn't contain additional biocides. The high pH (12,5/13,5) of a lime coating is itself a basic environment with natural antiseptic properties. It contributes to purifying the living spaces and improving their livability.

## 水蒸气渗透率

不同于丙烯酸涂料, 石灰基涂料, 由于其性质, 不会形成物理屏障的水蒸气传播。相反, 它会促进空气和水汽交换在整个墙壁。干燥的墙面有助于健康舒适的家庭环境。

## 有生物杀菌剂吗?

答案是否定的, 曼岛石灰基系列不含额外的生物杀菌剂。石灰涂料的高pH值(12.5/13.5)本身就是具有天然防腐性能的基本环境。它有助于净化生活空间, 提高生活空间。





# ManX the four elements

构成石灰基的4大元素

We begin from the stone, stone again, after a series of separation, transformation, finally extract natural mineral essence, the stone itself without affecting its naturalness, durability, and vapor permeability, this kind of material, referred to as "the most natural and environmental protection" lime base material.

我们从石头开始,再回到石头的状态,经过一系列的分离、改造,最终提取石头本身的天然矿物精华,而不影响它的自然性,耐久性,和蒸汽渗透性,这种材质,被称为是“最为天然与环保的”石灰基材料。



The more water that is added to the desalination process, the higher the efficiency of the oxidation reaction, which is essentially a slow reaction process. We add water to the lime to produce a highly exothermic process, which is often in contact with water due to the rotation of the machine.The strong reaction absorbs a large amount of water, and the temperature of steam generated by exothermic heat exchange is as high as 150°C(300°F).This is a chemical reaction, the hydration of the oxide, and also the physical reaction, to turn the state from a solid into a hot emulsion, called calcium hydroxide, or calcareous lime or lime milk.

在脱盐过程中加入的水越多,氧化反应的效率就越高,这实质上是一个缓慢的反应过程。我们将水添加到石灰中,从而产生一个高度放热的过程,由于机器的旋转,石灰经常与水接触。强烈反应吸收大量的水,在放热热交换产生蒸汽的温度高达150°C(300°F)。这是一种化学反应,氧化物的水化作用,也会发生物理反应,将状态从固体转变成热的乳浆,称为氢氧化钙,或称为熟石灰或石灰乳。

We will pick some of the wood from the years to be the best burning material, in different weather conditions, with different mixtures to ensure optimum combustion temperature.The smaller limestone is separated to get the same size of load, and eventually the limestone is cooked evenly. The cooking process of these stones is very slow and steady, with an average temperature of 900 degrees (about 1650 degrees Fahrenheit), a process that takes about seven days.At this stage, calcium carbonate and magnesium carbonate release carbon dioxide, reducing the weight of the stones by a third.

我们会挑选一些上了年份的木头作为最佳的燃烧材料,在不同的天气条件下,以不同的混合物来保证最佳的燃烧温度。较小的石灰岩被分开以获得相同大小的负载,最后是石灰岩的均匀蒸煮。这些鹅卵石的蒸煮过程非常缓慢和稳定,平均温度为900度(大约是1650华氏度),这个过程大约需要持续7天。在这一阶段,碳酸钙和碳酸镁释放出其中的二氧化碳,使得鹅卵石的重量减少了三分之一。



We put these through a series of chemical reactions and physical response of hydrated lime, after about three months later, after a continuous "fermentation" slaked lime began to present a "creamy" at present, but from raw material to the final molding and put into use, the whole stage need for 24 months or so.After 24 months of continuous hydration, particles from the macro and orderly arranged to micro crystal structure, originally soft mud also completely with the softness and consistency, finally only achieve full saturation "creamy" slaked lime, can guarantee that is used in the isle of lime base material.

我们放置这些经过一系列化学反应和物理反应的熟石灰,大约经过3个月后,经过不间断“发酵”的熟石灰目前开始呈现出“乳脂状”,但是从原材料到最终的成型并投入使用,整个阶段需要持续24个月左右。在经过24个月的连续水化后,颗粒从宏观有序的排列到微观晶体的结构,原本松软的泥浆也完全具了柔软性和一致性,最后只有达到充分饱和和状态的“乳脂状”熟石灰,才可以保证被使用在曼岛石灰基的材料中。



# Creating lime (The seasoning)

石灰基的诞生 (石灰的风化与形成)

What is obtained is a “fresh” , it is left to rest in pits where the seasoning process begins.  
It takes a minimum of 3 months for the lime used in preparation of mortars, or a minimum of 24 months for that used as binder for finishing coatings, such as the ManX lime based finishes.  
During the seasoning two different and complementary reactions take place, one is chemical, the other is physical. Both are extremely important to obtain a high quality lime.

它离开了原始的矿洞开始了风化的过程，获得的是新鲜的石灰。用于制备砂浆的石灰最少需要3个月的时间，或至少需要24个月的时间作为粘合剂用于罩面涂层，如ManX石灰基涂料。在风化过程中发生两种不同的互补反应，一种是化学反应，另一种是物理反应。这两个对获得高质量的石灰是非常重要的。

# Lime seasoning (Chemical change)

石灰基的形成 (化学变化)

From a chemical point of view, the hydration of the two oxides goes on at different speed for lime and magnesium.Magnesium oxide needs a much longer time than calcium oxide to become hydroxide.  
The 16% content of Magnesium in the mineral is very important, it gives to the final applied finish an immediate abrasion resistance and an excellent weather resistance with the aging.

从化学角度来看，石灰和镁这两种氧化物在不同速度下进行水合作用，氧化镁需要比氧化钙长得多的时间变成氢氧根。矿物中16%的镁含量非常重要，它赋予最终覆盖的涂层以即时耐磨性和极佳的耐老化性。

That’s why in the modern lime factories magnesium is often seen as a contaminant or impurity to be avoided. Most modern Lime has to be ready to use in a quick time, sold and used as hydrated lime in powder , to produce lime plasters, paints and stuccos.  
In fact, the unwanted presence of unhydrated calcium or magnesium oxide in the decorative finish creates uncontrollable alkali aggressions of the pigments or other component of the coating, which requires completely redoing the job.

这就是为什么在现代的石灰工厂里，镁通常被认为是一种被避免的污染物或杂质。大多数的现代石灰必须随时准备使用，出售和用作石灰粉，生产石灰膏药，油漆和灰泥。  
事实上，在装饰性表面上有害的未水合氧化钙或氧化镁的存在会导致颜料或涂层的其他组分不可控的碱侵害，这需要完全重做这些工作。





# Lime seasoning (Physical change)

石灰基的风化 (物理变化)

During the long seasoning the physical change becomes more and more important.  
After the initial stage in which the solution of calcium and magnesium hydroxide has a very low viscosity, the lime changes its structures becoming more creamy and “lime”. lime was originally named after this physical state, “slaked” means fat, “lime” means “fatty and greasy substance”.  
After 3 months the seasoned slaked lime is creamy and tender; after 24 months of continuous hydration, the particles morph from macro to micro crystals in an orderly structure, oriented by a weak electri.

在漫长的风化过程中, 物理的变化变得越来越重要。  
在初始阶段, 钙和氢氧化镁溶液的粘度很低, 熟石灰改变了它的结构变得更加光滑细腻和油腻。熟石灰最初是以这个物理状态命名的, “slaked”指的是普通熟石灰, “lime”的意思是含有油脂的熟石灰。3个月后, 经过风化的熟石灰呈乳脂状和柔软; 经过连续水合24个月后, 颗粒从宏观变为微晶体, 结构有序, 以弱电为导向。

# WORLD OF COLORS

ManX颜色选择

The product range of manntree natural lime-based finishes Includes many different coatings.  
Choosing a lime finish means not only choosing a color, but also a specific effect, texture, and application method that can embellish the design of the structure, a choice that will endure.

Manntree天然石灰涂料的产品系列包括许多不同的涂料。选择石灰处理不仅意味着选择一种颜色, 而且还意味着一种特定的效果、纹理和应用方法, 可以美化结构的设计, 这是一种持久的选择。





About Manntree

关于曼涂

Manntree is established in Manchester, UK. Adapt to the pace of global extension, Our headquater has been set up in London in 2015,and named “Manntree” formally. Since 1980, Manntree team was focus on developing and designing the Environmental Artist Coating, and supplied Research and development services to many International famous brands.

Manntree曼涂诞生于英国的曼切斯特, 为适应全球拓张的步伐, 2015年将总部设立在伦敦, 正式命名为Manntree曼涂。自上世纪80年代开始, 曼涂团队就专注于环保艺术涂料产品开发设计, 为众多国际知名品牌提供研发服务。

Manntree Today

今日曼涂

Manntree represents the Innovation,Concept and Environmental. Our team is committed supply clients with a full range of Artist colors and inspiration of environmental coating,and one-stop considerate services.

曼涂代表着创新、概念和环保。曼涂不但善于将创新的绿色灵感转化为概念产品, 更通过整合设计方案、原料配方、生产工艺等多方面资源, 最终使创意的火花得以成品面世。我们的团队致力于向顾客提供全系列色彩艺术灵感来源的健康环保涂料, 以及一站式的贴心服务。

GLOBAL Manntree

全球曼涂

Manntree intergrates the European minimalist design,the freedom and spirit of innovation of England, th advantage of production base in China, experienced team management and brand operation. We swear to show to all clients with fashion design,excllent quality and best services.

曼涂整合了欧洲的极简主义设计、英国严谨和创新的精神、中国的优势生产基地, 再加上丰富的团队管理和品牌运作经验, 誓要将时尚的设计、优秀的品质、周到的服务结合起来呈献给全球使用者。

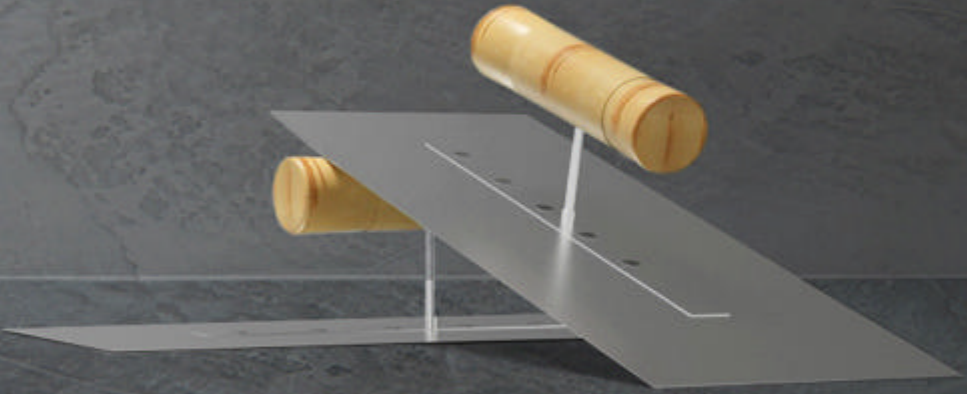


Manntree® 曼涂

— Paint My Love —











**ManX** raw materials based on the Manx isle, Manx isle has the manufacture must be used in isle of lime base of pebbles, the quality of the pebbles from a local called "Niarbyl" river, after a pollution-free water washed for a long time, makes the pebbles exceptionally smooth and white, a day of many raw materials procurement from Mannntree division will be chosen every pebble to carry on the deep processing, after calcining, filtration, sedimentation and let stand for 48 after working procedure, can be applied directly in the isle of lime base.

Today, ManX which was chosen as the main raw material of Manx isle, brings the natural raw material to China.

**曼岛石灰基 (ManX)** 的原材料取材于英国曼恩岛, 曼恩岛拥有着制造曼岛石灰基时必须使用的鹅卵石, 这些优质的鹅卵石源自当地一条名为“Niarbyl”河流, 经过无污染河水的长期冲刷, 使得这些鹅卵石变得格外光滑与洁白, 每天由来自Mannntree的众多原材料采购师将会臻选每一颗鹅卵石后进行深加工, 煅烧、过滤、沉淀、静置等48道工序之后, 即可直接被应用在曼岛石灰基中。

今天, 被选用作为曼岛石灰基原材料的曼岛鹅卵石, 将英国曼恩岛大自然原材带到了中国。





# THE ESTETHICS

美学

We may call it a Vintage look how often it is internationally in use. In fact, **Manntree ManX**, with its high workability is the ideal finish to create walls with a fascinating aged look characterized by color and movement. **Manntree ManX** can be used in the restoration of traditional and historical buildings and in contemporary architecture. Its characteristics enrich design enhancing furniture, interior design and the designers choices.



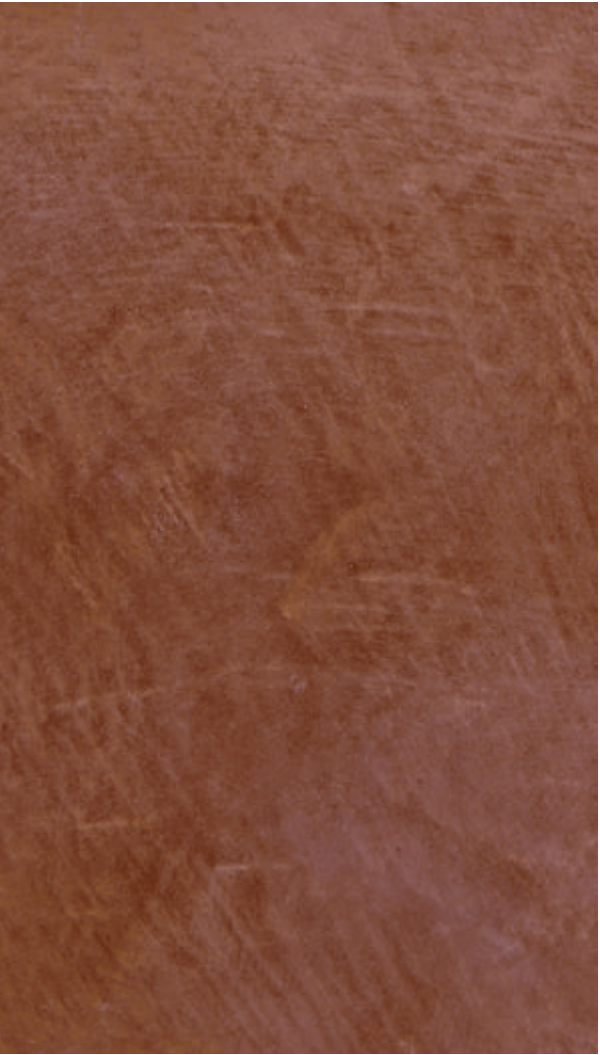
事实上，曼岛石灰基系列具有高的可加工性，是用色彩和运动为特征的迷人的外观设计理想的装饰。曼岛石灰基可以用于传统建筑和历史建筑的修复和现代建筑。它的特点是丰富设计，增强家具，室内设计和设计师的选择。

selected colors from the color chart **Manntree ManX**

MAS-M34A



MAS-M47A



MAS-M52A





The elegance of a sophisticated  
and classy surface.  
Walls, colors and textures  
精致优雅的表面。墙壁，颜色和纹理

**Manttree ManX,**  
Traditional application with a stainless steel trowel

color **MAS-M53A**  
From the color chart Manttree “**Lime-based color**”





An authentic and essential texture to transform space with simplicity and elegance  
一种真实而重要的纹理，以简洁和优雅的方式变换空间。

**Manntree ManX,**  
Traditional application with a stainless steel trowel

color **MAS-M42A**  
From the color chart Manntree “**Lime-based color**”





Exteriors with **Manntree ManX**:  
Color, structure and resistance  
Manntree曼岛石灰基外观:颜色、结构和阻力。

**Manntree ManX**,  
Traditional application with a stainless steel trowel

color **MAS-M58A**  
From the color chart Manntree “**Lime-based color**”





Classic and contemporary design harmonically  
combined together  
古典与现代的设计和谐地结合在一起。

**Manntree ManX,**  
Traditional application with a stainless steel trowel

color **MAS-M40A**  
From the color chart Manntree “**Lime-based color**”



# CONCRETE EFFECT

混凝土质感

The texture of **Manntree ManX** is the ideal surface to permit reinterpretations of modern style as the concrete effect.



曼岛石灰基的大理石纹理是理想的表面,可以重新诠释现代风格的具体效果。

selected colors from the color chart **Manntree ManX**

MAS-M49A



MAS-M51A



MAS-M59A





Metal, glass and the concrete effect:  
reinterpretations of metropolitan atmospheres  
金属，玻璃和混凝土效应：重新诠释都市气氛。

**Manntree ManX,**  
Traditional application with a stainless steel trowel

color **MAS-M50A**  
From the color chart Manntree “**Lime-based color**”



# CREATIVE EXPRESSIONS

创造性表达

Inspiration, experimentation and creativity found in **Manntree ManX** provide a special way to express new effects. The high workability gives the opportunity to create refined and elegant surfaces with a simple application technique. A versatile material which offers various interpretations of textures, colors and effects.

在曼岛石灰基中发现的灵感、实验和创造力提供了一种特殊的方式来表达新的影响。

高性能的材料使我们有机会用简单的应用技术创造出精致优雅的表面。一种多才多艺的材料，提供各种不同的纹理、颜色和效果。

selected colors from the color chart **Manntree ManX**



MAS-M25A



MAS-M27A



MAS-M29A



# Manntree ManX SUPER WAX

在曼岛石灰基中使用超蜡

**Manntree ManX SUPER WAX** is a cohesive surface and is resistant to abrasion. In interior environments exposed to condensation or abrasion due to contact, it is possible to apply on the surface a protective coating of **Manntree ManX SUPER WAX**.

Manntree ManX SUPER WAX是一种具有粘性的表面，具有耐磨损性。在暴露于接触的冷凝或磨损的室内环境中，有可能在表面涂上一层曼岛石灰基超蜡的保护层。



# COLOR RANGE

色彩的选择

A wide range of colors are available in the “ **Manntree ManX**” .

A special selection of shades is offered in the **Manntree** color chart “**Lime-based**” dedicated to seasoned slaked lime and exterior finishes.

**Manntree ManX** is tintable with all **Manntree** inorganic coloring pastes.

在“曼岛石灰基”的色卡上有多种颜色可供选择。

在Manntree的“Lime-based”色卡中提供了一种特殊的色度选择，专门用于熟透的石灰和外部装饰。Manntree与所有的ManX无机着色色浆都是可以调色的。







[www.manntree.co.uk](http://www.manntree.co.uk)