



LIME PAINT
STYLE FROM ENGLAND

Manntree
— Paint My Love —

ManX

ManX raw materials based on the Manx isle, Manx isle has the manufacture must be used in isle of lime base of pebbles, the quality of the pebbles from a local called "Niarbyl" river, after a pollution-free water washed for a long time, makes the pebbles exceptionally smooth and white, a day of many raw materials procurement from Manntree division will be chosen every pebble to carry on the deep processing, after calcining, filtration, sedimentation and let stand for 48 after working procedure, can be applied directly in the isle of lime base.

Today, ManX which was chosen as the main raw material of Manx isle, brings the natural raw material to China.

ManX the four elements

Stone:

We begin from the stone, stone again, after a series of separation, transformation, finally extract natural mineral essence, the stone itself without affecting its naturalness, durability, and vapor permeability, this kind of material, referred to as "the most natural and environmental protection" lime base material.

Water:

The more water that is added to the desalination process, the higher the efficiency of the oxidation reaction, which is essentially a slow reaction process. We add water to the lime to produce a highly exothermic process, which is often in contact with water due to the rotation of the machine. The strong reaction absorbs a large amount of water, and the temperature of steam generated by exothermic heat exchange is as high as 150°C(300°F). This is a chemical reaction, the hydration of the oxide, and also the physical reaction, to turn the state from a solid into a hot emulsion, called calcium hydroxide, or calcareous lime or lime milk.

Fire:

We will pick some of the wood from the years to be the best burning material, in different weather conditions, with different mixtures to ensure optimum combustion temperature. The smaller limestone is separated to get the same size of load, and eventually the limestone is cooked evenly. The cooking process of these stones is very slow and steady, with an average temperature of 900 degrees (about 1650 degrees Fahrenheit), a process that takes about seven days. At this stage, calcium carbonate and magnesium carbonate release carbon dioxide, reducing the weight of the stones by a third.

What we get is a corrosive substance, unstable, highly hygroscopic, called calcium oxide (and magnesium oxide), also known as rapid lime.

Time:

We put these through a series of chemical reactions and physical response of hydrated lime, after about three months later, after a continuous "fermentation" slaked lime began to present a "creamy" at present, but from raw material to the final molding and put into use, the whole stage need for 24 months or so. After 24 months of continuous hydration, particles from the macro and orderly arranged to micro crystal structure, originally soft mud also completely with the softness and consistency, finally only achieve full saturation "creamy" slaked lime, can guarantee that is used in the isle of lime base material.



CREATING LIME (The seasoning)

What is obtained is a "fresh", it is left to rest in pits where the seasoning process begins. It takes a minimum of 3 months for the lime used in preparation of mortars, or a minimum of 24 months for that used as binder for finishing coatings, such as the Manx lime based finishes.

During the seasoning two different and complementary reactions take place, one is chemical, the other is physical. Both are extremely important to obtain a high quality lime.



Lime seasoning (Chemical change)

From a chemical point of view, the hydration of the two oxides goes on at different speed for lime and magnesium. Magnesium oxide needs a much longer time than calcium oxide to become hydroxide.

The 16% content of Magnesium in the mineral is very important, it gives to the final applied finish an immediate abrasion resistance and an excellent weather resistance with the aging.

That's why in the modern lime factories magnesium is often seen as a contaminant or impurity to be avoided. Most modern Lime has to be ready to use in a quick time, sold and used as hydrated lime in powder, to produce lime plasters, paints and stuccos.

In fact, the unwanted presence of unhydrated calcium or magnesium oxide in the decorative finish creates uncontrollable alkali aggressions of the pigments or other component of the coating, which requires completely redoing the job.



Lime seasoning (Physical change)

During the long seasoning the physical change becomes more and more important. After the initial stage in which the solution of calcium and magnesium hydroxide has a very low viscosity, the grassello changes its structures becoming more creamy and "greasy". Grassello was originally named after this physical state, "grasso" means fat, "grassello" means "fatty and greasy substance."

After 3 months the seasoned slaked lime is creamy and tender; after 24 months of continuous hydration, the particles morph from macro to micro crystals in an orderly structure, oriented by a weak electric field.



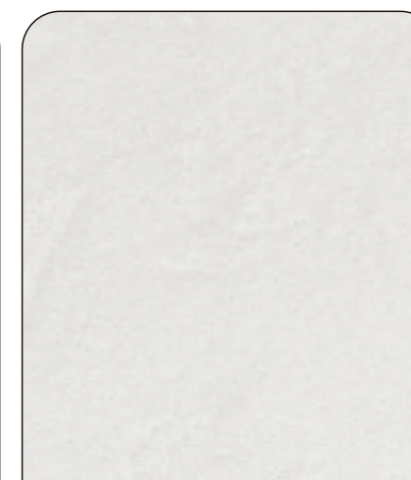
WORLD OF COLORS

The product range of manntree natural lime-based finishes includes many different coatings.

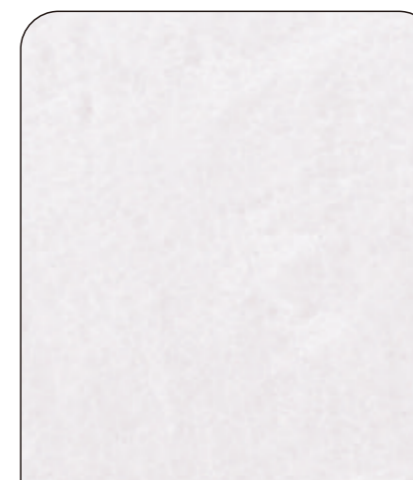
Choosing a lime finish means not only choosing a color, but also a specific effect, texture, and application method that can embellish the design of the structure, a choice that will endure.



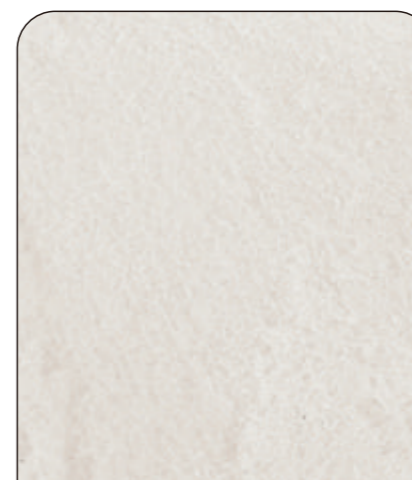
MAS-M04A



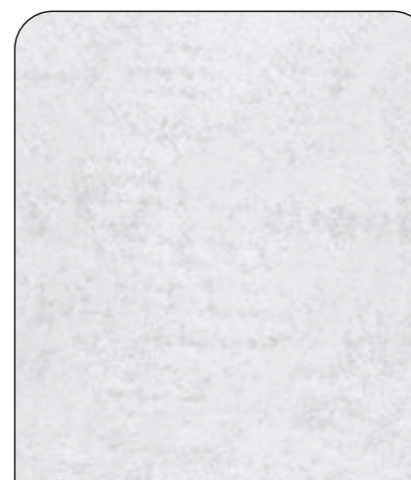
MAS-M02A



MAS-M08A



MAS-M06A



MAS-M21A



MAS-M23A



MAS-M13A





MAS-M39A

MAS-M49A

MAS-M51A

MAS-M53A

MAS-M55A

MAS-M27A

MAS-M29A

MAS-M31A

MAS-M26A

MAS-M25A

MAS-M16A

MAS-M14A

MAS-M18A

MAS-M34A





MAS-M38A

MAS-M37A

MAS-M50A

MAS-M03A

MAS-M01A

MAS-M20A

MAS-M05A

MAS-M07A

MAS-M09A

MAS-M10A

MAS-M11A

MAS-M12A

MAS-M15A

MAS-M17A





MAS-M30A

MAS-M28A

MAS-M32A

MAS-M36A

MAS-M19A

MAS-M24A

MAS-M22A

MAS-M52A

MAS-M54A

MAS-M35A

MAS-M33A

MAS-M40A

MAS-M41A

MAS-M57A

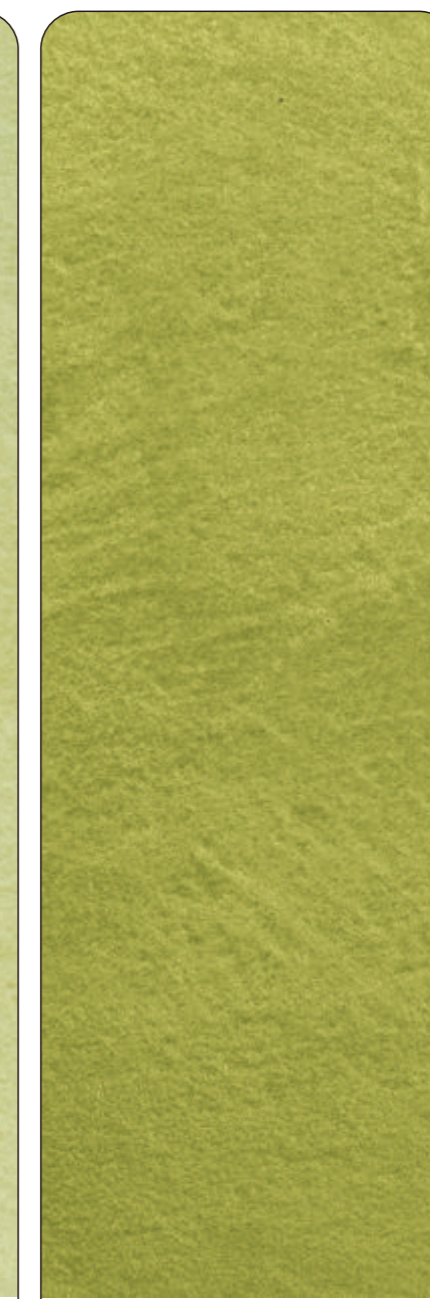




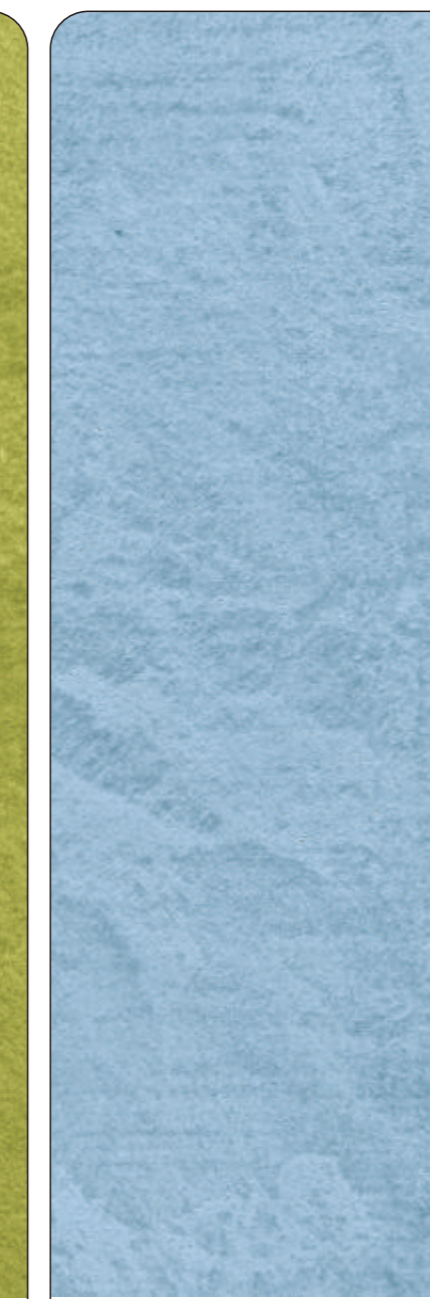
MAS-M44A



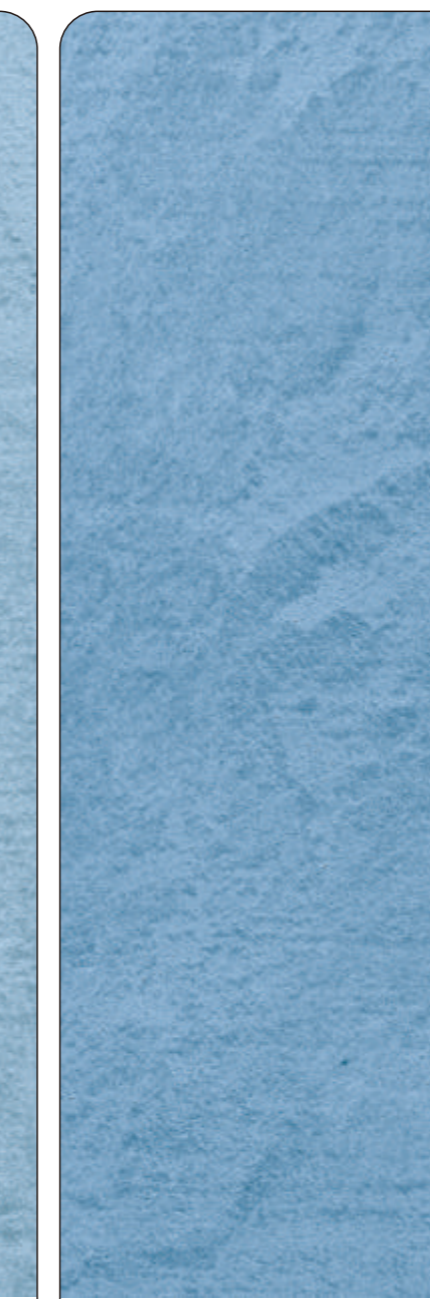
MAS-M46A



MAS-M48A



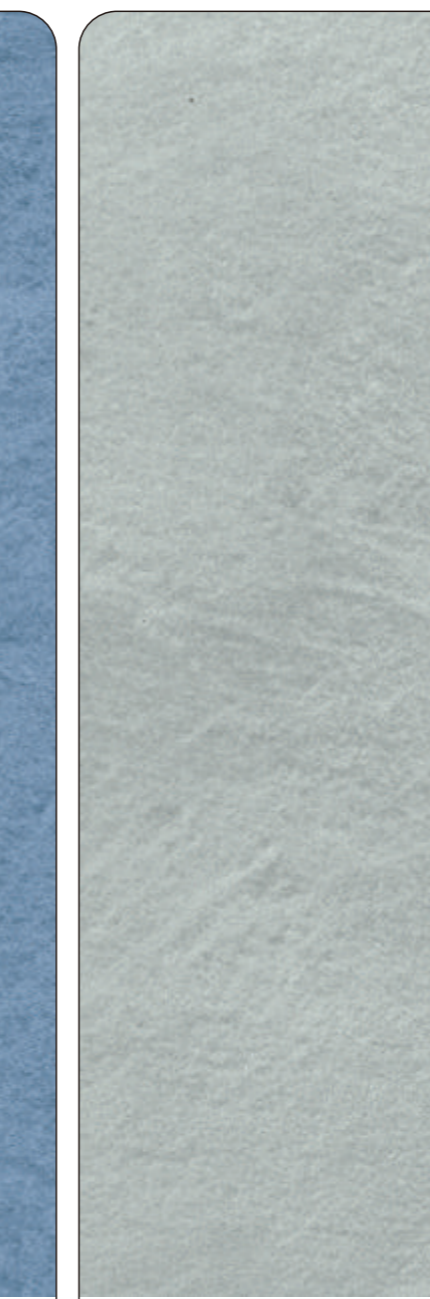
MAS-M43A



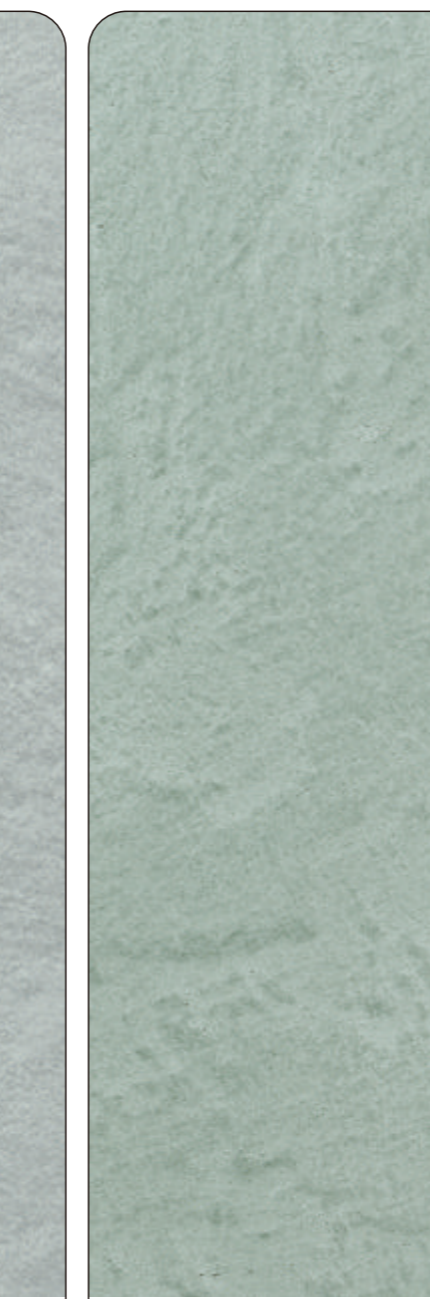
MAS-M45A



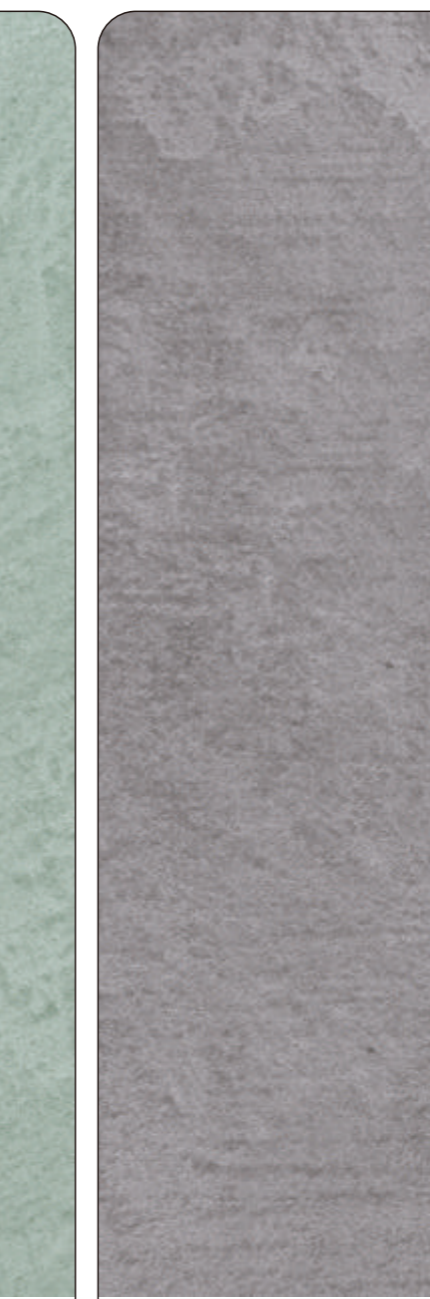
MAS-M47A



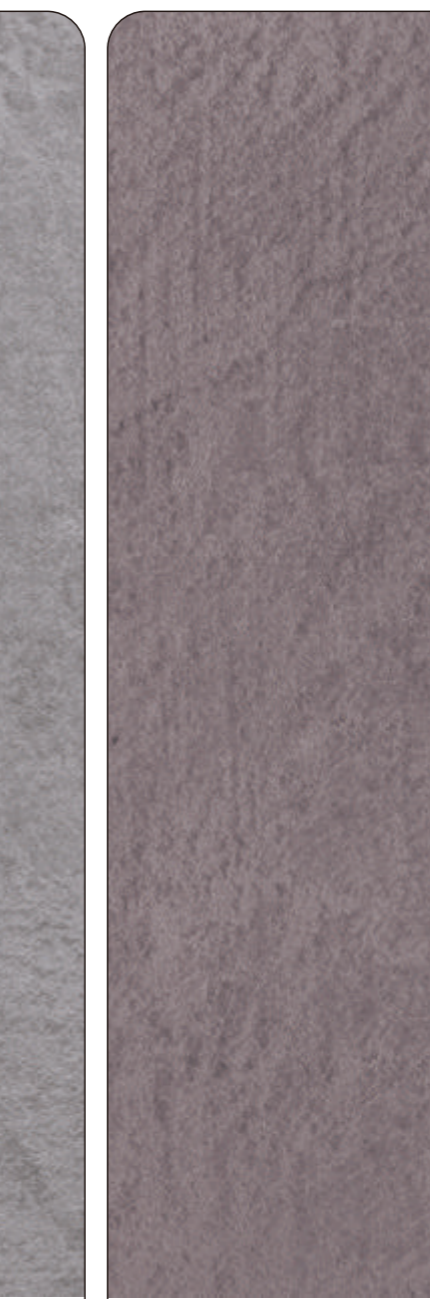
MAS-M59A



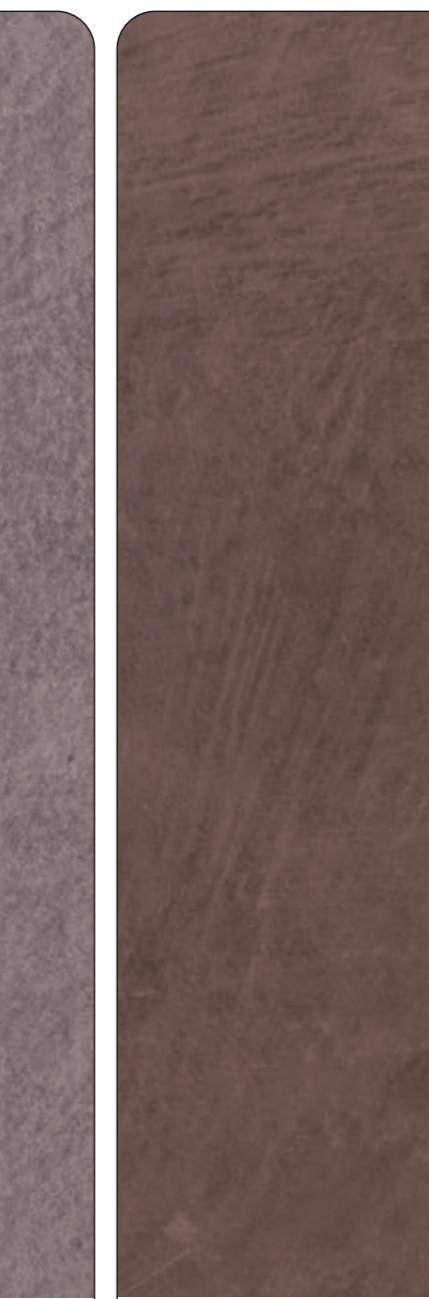
MAS-M42A



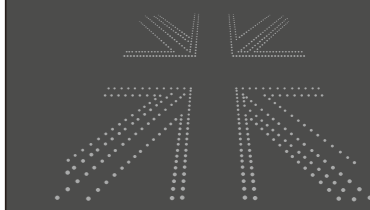
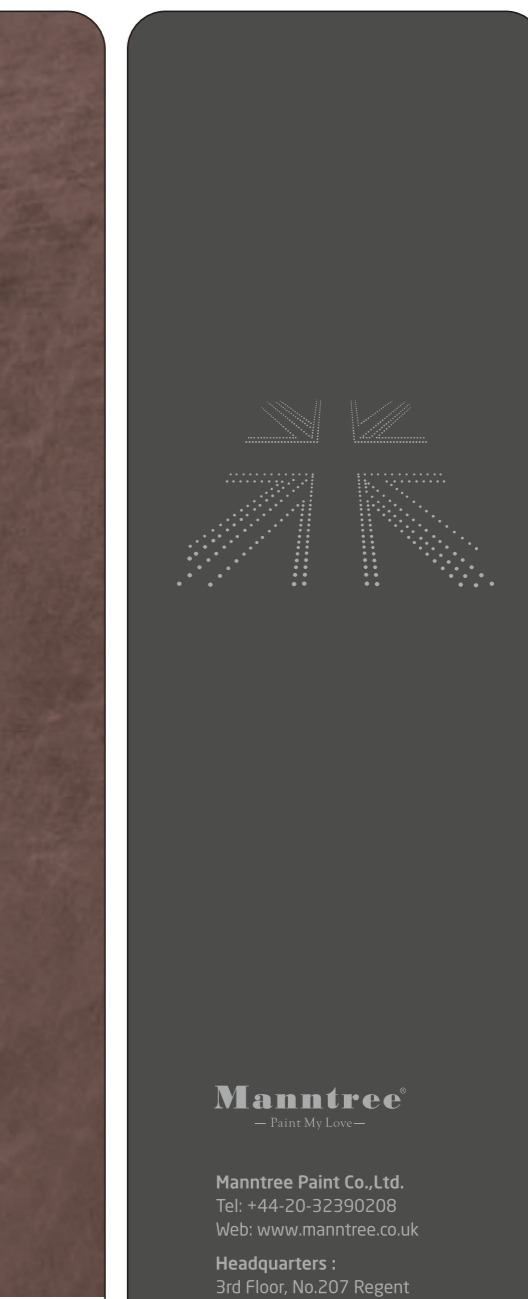
MAS-M58A



MAS-M60A



MAS-M56A



Manntree
— Paint My Love —

Manntree Paint Co., Ltd.
Tel: +44-20-32390208
Web: www.manntree.co.uk

Headquarters :
3rd Floor, No.207 Regent
street, London, United Kingdom

